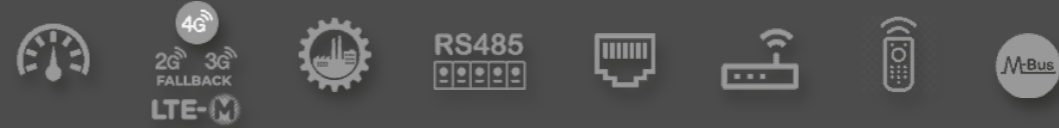
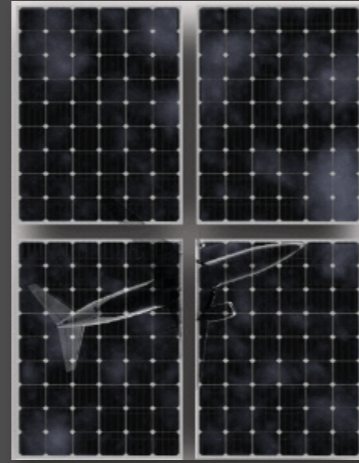




PRODUCT CATALOG

INDUSTRIAL IoT ROUTERS





CELLULAIRE PRODUITS

INDUSTRIAL IoT ROUTERS and DCUs

ROUTERS | GATEWAYS | DATA CONCENTRATORS

High-quality IoT and IIoT routers for industrial applications

These devices are able to manage and control complex connected environments by aggregating and transmitting sensor data, as well as translating communication protocols serving as a bridge between IoT devices and platforms.

Our multi-protocol industrial LTE Cat.4, Cat.1, Cat.M gateways can be used in many different verticals such as smart grids, building or factory automations, fleet management, security systems, etc., but some are designed for specific applications such as substation management.

There is a growing trend in industrial IoT towards the edge as is the case in many technologies. Our Linux-based routers offer the possibility of Cloud computing functionalities, as users can develop their own apps to run on them.

Data concentrators (or DCUs) have an important role in a variety of Industrial Internet of Things (IIoT) applications. They collect and aggregate data from multiple industrial devices which can be sent to central management systems.

A data concentrator is the backbone of modern Automated Metering Infrastructures (or AMI) and industrial automation projects. The versatile devices that can be mounted on a DIN rail have Ethernet, RS232, RS485 ports, digital inputs, Modbus RTU/Modbus TCP Gateway, Mbus or wireless M-Bus functions for industrial data collection and automation purposes. Data transmission can be done via an RS485 connection or the usage of the wireless mobile network. Even using a single router or data concentrator (DCU) is a very cost-effective solution for collecting data from industrial devices, energy meters (electricity, water, gas, sensors) or for monitoring devices.

These products are primarily intended for places that require high availability and for professional purposes – e.g. we recommend to use these for members of production and industry, maintenance and service providers.



PRODUCTS / INDUSTRIAL IoT ROUTERS and DCUs



Basic industrial wireless router with Cat.4 cellular module for applications demanding secure, high-speed connection



ONLINE MANAGEMENT QoS & ANALYTICS REMOTE FW UPDATES CENTRAL CONTROL

HARDWARE

Mobile	LTE Cat.4 / 3G / 2G
Powering	12V DC, 1A (9-24V)
SIM	mini SIM (2FF)
Antenna connectors	2 external Antenna connector (SMA, 50 Ohm)
Ports	▪ Ethernet (RJ45, 10/100Mbit, LAN) ▪ micro-USB ▪ microSD card slot
Status LEDs	3 status LEDs
Housing / Protection rating	Rugged, robust aluminum casing / IP51
Mount and Fastening	35mm DIN-rail adapter (optional)
Operating Temperature	from -40°C to +80°C
Dimensions / Weight	92.5 x 85 x 35mm / 180 gr.

SOFTWARE

Operation system / User interface	OpenWrt® with Linux kernel v4.94 / LuCi® web user interface
Protocols	DHCP, DynDNS, IP route, NAT, IPv4/IPv6, (S)FTP, (S)NTP, HTTP(S), SSHv2, (m)GRE, OpenVPN
Security	Watchdog, firewall, IPSec, TLS v1.2, TR-069
Management platform	Device Manager® software (firmware refresh, configuration, QoS, reboot, remote voice call, remote control) - order option

M2M LTE Cat.4 ROUTER



NETWORK

4G LTE Cat.4 / 3G / 2G
mini SIM (2FF)

CONNECTIVITY

ETHERNET
micro-USB
microSD card slot

DESIGN

Industrial, robust design
Aluminum IP51 enclosure
DIN-rail mount

FEATURES

Transparent data sending for camera systems
OpenWrt / WebGUI
Device Manager platform

FEATURES

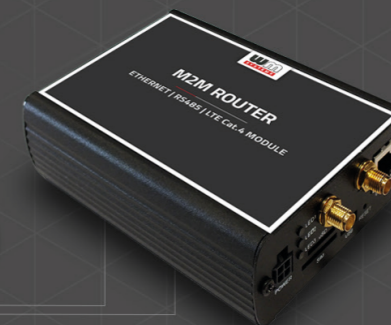
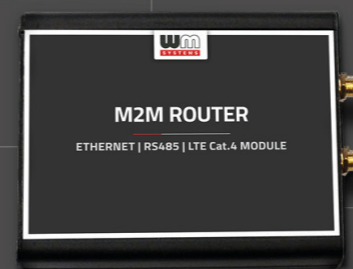
- ✓ OpenWRT
- ✓ Firewall
- ✓ VPN
- ✓ WebGUI
- ✓ Device Manager
- ✓ 4G LTE Cat.4

PROTOCOL

- ⇒ HTTP
- ⇒ FTP
- ⇒ sFTP
- ⇒ Sntp

PORTS/PHYSICAL CONNECTORS

- :: Ethernet
- :: Micro USB
- :: Micro SD



PRODUCTS / INDUSTRIAL IoT ROUTERS and DCUs



Reliable and Rugged Communication Device for Smart Grid and Industrial Applications



ONLINE MANAGEMENT QoS & ANALYTICS REMOTE FW UPDATES CENTRAL CONTROL

M2M INDUSTRIAL ROUTER 2 SECURE



NETWORK

4G LTE Cat.1 / 450MHz / 2G
4G LTE Cat.M / Cat.NB / 450MHz / 2G
mini SIM / Chip SIM (MFF2)

CONNECTIVITY

ETHERNET
USB Ethernet interface

DESIGN

Industrial, robust design
Aluminum IP51 enclosure
DIN-rail mount

FEATURES

Secure Boot
Secure Key Storage
Transparent data sending
Command Line (SSHv2)
Device Manager platform

HARDWARE

Mobile	Order options: ■ LTE Cat.1 / 450MHz / 2G ■ LTE Cat.M / Cat.NB / 450MHz / 2G
Powering	12V DC, 1A (9-32V) / Supercapacitor
SIM	mini SIM (2FF) / Chip SIM option (MFF2)
Antenna connectors	1 external Antenna connector (SMA, 50 Ohm)
Ports	■ Ethernet (RJ45, 10/100Mbit, LAN) ■ micro-USB
Status LEDs	3 status LEDs
Housing / Protection rating	Rugged, robust aluminum casing / IP51
Mount and Fastening	35mm DIN-rail adapter (optional)
Operating Temperature	from -40°C to +75°C
Dimensions / Weight	92.5 x 85 x 35mm / 175 gr.

SOFTWARE

Operation system / User interface	OpenWrt® with Linux kernel v5.10 / UCI command line
Protocols	DHCP, DynDNS, IP route, IPv4/IPv6, (S)FTP, (S)NTP, SSHv2
Security	Secure Boot, Secure Key Storage (eMMC memory chip), watchdog, firewall, IPSec, TLS v1.2, supercapacitor with LastGASP, network interface connection/disconnection alarm
Management platform	Device Manager® software (firmware refresh, configuration, QoS, reboot, remote control)

FEATURES

- ✓ OpenWRT
- ✓ Firewall, IPSec
- ✓ eMMC chip
- ✓ SecureBOOT
- ✓ Device Manager
- ✓ LTE Cat.1 / 450 / 2G or LTE Cat.M / Cat.NB / 450 with 2G "fallback"

PROTOCOL

- ⇒ DHCP
- ⇒ FTP / sFTP
- ⇒ NTP / SNTP
- ⇒ SSHv2
- ⇒ TLS v1.2



PORTS/PHYSICAL CONNECTORS

- :: Ethernet
- :: Mini SIM / Chip SIM (MFF2)
- :: Micro USB

PRODUCTS / INDUSTRIAL IoT ROUTERS and DCUs



Reliable and Rugged Communication Device for Smart Grid and Industrial Applications



ONLINE MANAGEMENT QoS & ANALYTICS REMOTE FW UPDATES CENTRAL CONTROL

M2M INDUSTRIAL ROUTER 2 DCU



NETWORK

4G LTE Cat.1 / 450MHz / 2G
4G LTE Cat.M / Cat.NB / 450MHz / 2G
mini SIM / Chip SIM (MFF2)

CONNECTIVITY

ETHERNET / Modbus TCP
RS485 / Modbus RTU
USB Ethernet interface

DESIGN

Industrial, robust design
Aluminum IP51 enclosure
DIN-rail mount

FEATURES

Secure Boot
Secure Key Storage
Data acquisition
OpenWrt / WebGUI
Device Manager platform

HARDWARE

Mobile	Order options: ■ LTE Cat.1 / 450MHz / 2G ■ LTE Cat.M / Cat.NB / 450MHz / 2G
Powering	12V DC, 1A (9-32V) / Supercapacitor
SIM	mini SIM (2FF) / Chip SIM option (MFF2)
Antenna connectors	1 external Antenna connector (SMA, 50 Ohm)
Ports	■ Ethernet (RJ45, 10/100Mbit, LAN, Modbus TCP) ■ RS485 (Modbus RTU) ■ micro-USB
Status LEDs	3 status LEDs
Housing / Protection rating	Rugged, robust aluminum casing / IP51
Mount and Fastening	35mm DIN-rail adapter (optional)
Operating Temperature	from -40°C to +75°C
Dimensions / Weight	92.5 x 85 x 35mm / 175 gr.

SOFTWARE

Operation system / User interface	OpenWrt® with Linux kernel v5.10 / LuCi® web user interface, UCI command line
Protocols	DHCP, DynDNS, IP route, NAT, IPv4/IPv6, (S)FTP, (S)NTP, HTTP(S), SSHv2, VPN
Security	Secure Boot, Secure Key Storage (eMMC memory chip), watchdog, firewall, IPSec, TLS v1.2, supercapacitor with LastGASP, network interface connection/disconnection alarm
Data acquisition	Reading PLC registers using Modbus, sending data to the data center through MQTT
Management platform	Device Manager® software (firmware refresh, configuration, QoS, reboot, remote voice call, remote control) - order option

FEATURES

- ✓ OpenWRT
- ✓ Firewall
- ✓ IPSec, OpenVPN
- ✓ eMMC chip
- ✓ SecureBOOT
- ✓ Device Manager
- ✓ LTE Cat.1 / 450 / 2G or LTE Cat.M / Cat.NB / 450 with 2G "fallback"

PROTOCOL

- ⇒ DHCP, DynDNS
- ⇒ FTP / sFTP
- ⇒ NTP / SNTP
- ⇒ HTTPS
- ⇒ SSHv2
- ⇒ TLS v1.2
- ⇒ Modbus TCP, RTU
- ⇒ MQTT



PORTS/PHYSICAL CONNECTORS

- :: Ethernet
- :: RS485
- :: Mini SIM / Chip SIM (MFF2)
- :: Micro USB

PRODUCTS / INDUSTRIAL IoT ROUTERS and DCUs



Advanced industrial router with high-end DCU features



ONLINE MANAGEMENT QoS & ANALYTICS REMOTE FW UPDATES CENTRAL CONTROL

M2M INDUSTRIAL ROUTER 2 DCU MBUS



NETWORK

4G LTE Cat.1 / 450MHz / 2G
4G LTE Cat.M / Cat.NB / 450MHz / 2G
mini SIM / Chip SIM (MFF2)

CONNECTIVITY

ETHERNET / Modbus TCP
RS485 / Modbus RTU
Mbus / Optional wireless Mbus
USB Ethernet interface

DESIGN

Industrial, robust design
Aluminum IP51 enclosure
DIN-rail mount

FEATURES

Secure Boot
Secure Key Storage
Data acquisition
OpenWrt / WebGUI
Device Manager platform

HARDWARE

Mobile	Order options: ■ LTE Cat.1 / 450MHz / 2G ■ LTE Cat.M / Cat.NB / 450MHz / 2G
Powering	12V DC, 1A (9-32V) / Supercapacitor
SIM	mini SIM (2FF) / Chip SIM option (MFF2)
Antenna connectors	1 external Antenna connector (SMA, 50 Ohm)
Ports	■ Ethernet (RJ45, 10/100Mbit, LAN, Modbus TCP) ■ RS485 (Modbus RTU) ■ Mbus ■ micro-USB
Status LEDs	3 status LEDs
Housing / Protection rating	Rugged, robust aluminum casing / IP51
Mount and Fastening	35mm DIN-rail adapter (optional)
Temperature / Dimensions / Weight	Operating temperature from -40°C to +75°C / 92.5 x 85 x 35mm / 175 gr.

SOFTWARE

Operation system / User interface	OpenWrt® with Linux kernel v5.10 / LuCi® web user interface, UCI command line
Protocols	DHCP, DynDNS, IP route, NAT, IPv4/IPv6, (S)FTP, (S)NTP, HTTP(S), SSHv2, VPN, MQTT
Security	Secure Boot, Secure Key Storage (eMMC memory chip), watchdog, firewall, IPSec, TLS v1.2, supercapacitor with LastGASP, network interface connection/disconnection alarm
Data acquisition	Reading PLC registers using Modbus, reading meter data using the Mbus (up to 250 devices), optional wireless Mbus (up to 1 000 devices) sending data to the data center
Management platform	Device Manager® software (firmware refresh, configuration, QOS, reboot) - order option

FEATURES

- ✓ OpenWRT
- ✓ Firewall
- ✓ IPSec, OpenVPN
- ✓ eMMC chip
- ✓ SecureBOOT
- ✓ Device Manager
- ✓ LTE Cat.1 / 450 / 2G or LTE Cat.M / Cat.NB / 450 with 2G "fallback"

PROTOCOL

- ⇌ DHCP, DynDNS
- ⇌ FTP / sFTP
- ⇌ NTP / SNTP
- ⇌ HTTPS
- ⇌ SSHv2
- ⇌ TLS v1.2
- ⇌ Modbus / Mbus
- ⇌ MQTT

PORTS/PHYSICAL CONNECTORS

- :: Ethernet
- :: RS485
- :: Mini SIM / Chip SIM (MFF2)
- :: Micro USB
- :: Mbus



PRODUCTS / INDUSTRIAL IoT ROUTERS and DCUs



Industrial cellular router, gateway and data concentrator developed specifically for IoT and IIoT applications



ONLINE MANAGEMENT QoS & ANALYTICS REMOTE FW UPDATES CENTRAL CONTROL

M2M ROUTER PRO4



NETWORK

4G LTE Cat.1 / 3G / 2G
4G LTE Cat.1 / 2G
mini SIM (2FF)

CONNECTIVITY

4 ETHERNET
RS485/Modbus
2 Digital Input
micro-USB

DESIGN

Industrial, robust design
IP51 enclosure, sealable
DIN-rail mount (built-in)

FEATURES

microSD card slot
Data acquisition
OpenWrt / WebGUI
Device Manager platform

HARDWARE

Mobile	Order options: ■ LTE Cat.1 / 3G / 2G ■ LTE Cat.1 / 2G
Powering	100..230V AC (can be ordered also with 12..24V DC power input) / Supercapacitor
SIM	mini SIM (2FF)
Antenna connectors	2 external Antenna connector (SMA, 50 Ohm)
Ports	■ 4 Ethernet (RJ45, 10/100Mbit, LAN) ■ RS485 ■ 2 Digital Input ■ micro-USB ■ microSD
Status LEDs	9 connectivity status LEDs, 4 network signal strength LEDs
Housing / Protection rating	Plastic (ABS) casing / IP51
Mount and Fastening	built-in 35mm DIN-rail mount
Operating Temperature	from -35°C to +55°C
Dimensions / Weight	150 x 150 x 58mm / 460 gr. (without terminal cover: 150 x 130 x 58mm / 410 gr.)

SOFTWARE

Operation system / User interface	OpenWrt® with Linux kernel v4.94 / LuCi® web user interface, UCI command line
Protocols	DHCP, DynDNS, IP route, NAT, IPv4/IPv6, (S)FTP, (S)NTP, HTTP(S), SSHv2, IP passthrough, IPsec, OpenVPN, Modbus TCP, Modbus RTU, Modbus Gateway, MQTT, LwM2M
Security	Watchdog, firewall, IEE 802.1x and AES128/AES256 encryption, supercapacitor/LastGASP
Data acquisition	Data collection on via TCP/IP Gateway (Scada), data sending by LwM2M or MQTT
Management platform	SNMPv3, Device Manager® software (firmware refresh, configuration, QoS, reboot, remote voice call, remote control) - order option



FEATURES

- ✓ IP51, sealable
- ✓ DIN-rail mount
- ✓ OpenWRT
- ✓ Firewall
- ✓ VPN
- ✓ WebGUI
- ✓ Device Manager



PORTS/PHYSICAL CONNECTORS

- :: 4x Ethernet
- :: 2X SIM
- :: Digital Input
- :: RS485/Mbus
- :: Micro USB
- :: Micro SD



PROTOCOL

- ⇌ HTTP
- ⇌ FTP
- ⇌ sFTP
- ⇌ SNMP
- ⇌ MODBUS
- ⇌ Mbus
- ⇌ MQTT etc.

PRODUCTS / INDUSTRIAL IoT ROUTERS and DCUs



Data concentrator with MBus feature for smart metering application and industrial automation



ONLINE MANAGEMENT QoS & ANALYTICS REMOTE FW UPDATES CENTRAL CONTROL

HARDWARE

Mobile	LTE Cat.4 / 3G / 2G
Powering	100..230V AC (can be ordered also with 12..24V DC power input) / Supercapacitor
SIM	mini SIM (2FF)
Antenna connectors	2 external Antenna connector (SMA, 50 Ohm)
Ports	■ 4 Ethernet (RJ45, 10/100Mbit, LAN) ■ RS485 ■ MBus ■ 2 Digital Input ■ micro-USB ■ microSD
Status LEDs	9 connectivity status LEDs, 4 network signal strength LEDs
Housing / Protection rating	Plastic (ABS) casing / IP51
Mount and Fastening	built-in 35mm DIN-rail mount
Operating Temperature	from -35°C to +55°C
Dimensions / Weight	150 x 150 x 58mm / 460 gr. (without terminal cover: 150 x 130 x 58mm / 410 gr.)

SOFTWARE

Operation system / User interface	OpenWrt® with Linux kernel v4.94 / LuCi® web user interface, UCI command line
Protocols	DHCP, DynDNS, IP route, NAT, IPv4/IPv6, (S)FTP, (S)NTP, HTTP(S), SSHv2, IP passthrough, IPSec, OpenVPN, Modbus TCP, Modbus RTU, Modbus Gateway, MQTT, LwM2M
Security	Watchdog, firewall, IEE 802.1x and AES128/AES256 encryption, supercapacitor/LastGASP
Data acquisition	Data collection on via TCP/IP Gateway (Scada) and MBus, data sending by LwM2M, MQTT
Management platform	SNMPv3, Device Manager® (FW refresh, configuration, QoS, remote control) - order option

M2M ROUTER PRO4 DCU MBUS



NETWORK

4G LTE Cat.1 / 3G / 2G
4G LTE Cat.1 / 2G
mini SIM (2FF)

CONNECTIVITY

4 ETHERNET
RS485/Modbus
2 Digital Input
MBus
micro-USB

DESIGN

Industrial, robust design
IP51 enclosure, sealable
DIN-rail mount (built-in)

FEATURES

microSD card slot
Data acquisition
OpenWrt / WebGUI
Device Manager platform



FEATURES

- ✓ IP51, sealable
- ✓ DIN-rail mount
- ✓ OpenWRT
- ✓ Firewall
- ✓ VPN
- ✓ WebGUI
- ✓ Device Manager



PORTS/PHYSICAL CONNECTORS

- :: 4x Ethernet
- :: 2X SIM
- :: Digital Input
- :: RS485/Modbus
- :: Micro USB
- :: Micro SD



PROTOCOL

- ⇌ HTTP
- ⇌ FTP
- ⇌ sFTP
- ⇌ SNMP
- ⇌ MODBUS
- ⇌ Mbus
- ⇌ MQTT etc.

PRODUCTS / INDUSTRIAL IoT ROUTERS and DCUs



Cellular based relay switch for universal industrial applications



ONLINE MANAGEMENT QoS & ANALYTICS REMOTE FW UPDATES CENTRAL CONTROL

M2M INDUSTRIAL ROUTER CONTROL BOX



NETWORK

4G LTE Cat.1 / 3G / 2G
LTE Cat.M / Cat.NB / 2G
mini SIM (2FF)

CONNECTIVITY

ETHERNET
RS485
P1 Interface (RJ45) - 5VDC power
4 Relays (2-3 way switching)
microSD card slot

DESIGN

IP52 enclosure, built-in mounting

FEATURES

Street Lighting / Load Management
Supercapacitor
OpenWrt / WebGUI
IEC 1107 / OSLP / TLS

HARDWARE

Mobile	Order options: ■ 4G LTE Cat.1 / 3G / 2G ■ LTE Cat.M / Cat.NB with 2G "fallback"
Powering	~100..240V AC ±10%, 50-60Hz ±5%
SIM	mini SIM (2FF)
Antenna connectors	1 Antenna connector (SMA, 50 Ohm)
Ports	■ Ethernet (RJ45, 10/100Mbit, LAN) ■ RS485 (isolated, for meters) ■ P1 interface (RJ45, for meters) with 5V DC power output ■ microSD card slot
Relay switching	4 latching relays (2pcs: COM, NC and 2pcs: COM, NC, NO) / 250VAC, 50Hz-60Hz / 16A
Housing / Mounting / LEDs	Plastic (ABS) IP52 casing / built-in mounting / 5 status LEDs (operation and relays)
Operating Temperature	from -40°C to +85°C
Dimensions / Weight	175 x 104 x 60mm / 420 gr.

SOFTWARE

Operation system / UI / Management	OpenWrt® with Linux kernel v4.94 / LuCi® web user interface, Device Manager platform
Operation	Scalable Smart Grid control and Public Lighting systems control: on-demand / scheduled, data sending to Concordia software (by OSLP protocol)
Protocols	DHCP, DynDNS, IP route, NAT, IPv4/IPv6, IP passthrough, HTTP(S), SSHv2, IEC 1107, OSLP
Security	Watchdog, firewall, supercapacitor (outage management), time zones, handling daylight saving, continuous monitoring, alerts, IPSec, TLS v1.2

COMPATIBILITY

- Street lighting cabinet connection, relay control



PROTOCOL

- ⇒ Transparent
- ⇒ IEC1107
- ⇒ TLS
- ⇒ OSLP

FEATURES

- ✓ Central switching/Relay control
- ✓ AC powered
- ✓ Supercap / LastGASP
- ✓ Device Manager
- ✓ Surge protection
- ✓ Load Management
- ✓ IP52 enclosure

PORTS/PHYSICAL CONNECTORS

- :: Ethernet
- :: RS485
- :: P1 interface (RJ45)
- :: 4pcs Relays (with 2 switch modes)
- :: micro SD card



PRODUCTS / INDUSTRIAL IoT ROUTERS and DCUs



Compact, 1M size, easy to install industrial router. Mountable to a DIN-rail



ONLINE MANAGEMENT QoS & ANALYTICS REMOTE FW UPDATES CENTRAL CONTROL

INDUSTRIAL DIN RAIL ROUTER



NETWORK

4G LTE Cat.4 / 3G / 2G
4G LTE Cat.1 / 2G
LTE Cat.M / Cat.NB with 2G and 450MHz options
mini SIM (2FF)

CONNECTIVITY

ETHERNET
RS232
RS485
Digital Input

DESIGN

Modular 1U design
IP31 enclosure
DIN-rail mount (built-in)

FEATURES

Transparent data sending
OpenWrt / WebGUI
Security features
Device Manager platform

HARDWARE

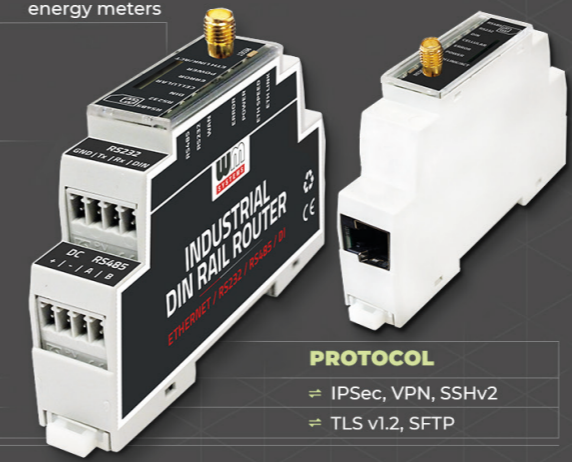
Mobile	Order options: ■ LTE Cat.4 / 3G / 2G ■ LTE Cat.1 with 2G or 2G/3G "fallback" ■ LTE Cat.M / Cat. NB with 2G "fallback" feature
Powering	12V DC (9-28V)
SIM	mini SIM (2FF)
Antenna connectors	1 external Antenna connector (SMA, 50 Ohm)
Ports	■ Ethernet (RJ45, 10/100Mbit, LAN) ■ RS232 ■ RS485 ■ Digital Input
Status LEDs	7 status LEDs
Housing / Protection rating	Plastic (ABS) casing / IP31
Mount and Fastening	built-in 35mm DIN-rail mount
Operating Temperature	from -20°C to +70°C
Dimensions / Weight	90 x 62 x 17.5mm / 45 gr. (without DIN rail fastener: 98 x 62 x 17.5mm)

SOFTWARE

Operation system / User interface	OpenWrt® with Linux kernel v5.10 / LuCi® web user interface, UCI command line
Protocols	DHCP, DynDNS, IP route, NAT, IPv4/IPv6, (S)FTP, (S)NTP, IP passthrough, HTTP(S), OpenSSH, OpenSSL
Security	Watchdog, firewall, IPSec, OpenVPN, TLS 1.2
Management platform	SNMPv3, Device Manager® software (firmware refresh, configuration, QoS, reboot, remote voice call, remote control) - order option

COMPATIBILITY

■ Cost-effective solution to connect multiple industrial devices, energy meters



PROTOCOL

⇒ IPSec, VPN, SSHv2
⇒ TLS v1.2, SFTP

FEATURES

- ✓ LTE Cat.4 / 3G / 2G, LTE Cat.1 / 2G or LTE Cat.M / Cat.NB modules
- ✓ DC powered
- ✓ OpenWRT with WebGUI
- ✓ Device Manager
- ✓ 35mm DIN rail fixation
- ✓ IP31 plastic case

PORTS/PHYSICAL CONNECTORS

- :: RS232 port
- :: RS485 port
- :: Ethernet (RJ45, LAN)
- :: Digital (logical) input
- :: DC power input





CELLULAR PRODUCTS

DEVICE MANAGEMENT

DEVICE MONITORING | CONFIGURATION | SECURE FIRMWARE UPDATES | ALARMS, EVENTS, REPORTS

The remote management and maintenance of an IIoT solution can be a real challenge. Improve the network availability and operational efficiency of your fleet!

The remote management and maintenance of an IIoT solution can be a real challenge. Device Manager is a central management application for our cellular routers, metering modems, switches and transmitters. Improve the network availability and operational efficiency of your fleet!

Device Manager is a solution for remote device and gateway management which allows faster deployment and guarantees the secure and proper functioning of IoT devices after they have been deployed.

Our remote device management offers state-of-the-art management functionalities including rapid device onboarding with bulk provisioning, easy administration, in-depth visibility of device status, its performance metrics and security issues, logical groupings of devices into hierarchical structures for mass software and firmware updates.

The Microsoft® Windows® based application hosted on-premise for high security and continuous remote management of IoT devices (routers, modems, IoT switches, etc.). Ideal for enterprise or government deployments with strict ICT policies.

Optimized for Large Scale Enterprise Deployments

Full-fledged monitoring solution, by design optimized for enterprise device management – with features highly appreciated by our utility clients and telco partners. For example, it automatically imports user access control and permissions from Microsoft® Active Directory® for authentication.

Designed to allow easy addition of new communication servers it provides maximum scalability.

Most industrial IoT deployments involve a huge number of devices. Large scale operations like these have to be optimized in order to allow faster time-to-market. The time spent on the deployment of each device adds up.

Our devices can be ordered with the Device Manager application pre-configured, so as soon as they are connected they are available in the remote management platform. Deployment time can be reduced from 15-20 minutes per device to 1-2 minutes.



PRODUCTS / DEVICE MANAGER



Our Device Manager solution is designed to streamline remote management and maintenance of our devices, ensuring fast and secure deployment and optimal device performance throughout their lifecycle.

Equipped with cutting-edge management features, such rapid device onboarding with bulk provisioning, easy administration and comprehensive visibility of device status and performance metrics, our remote device management offers unmatched support for large-scale enterprise device management.

Device Manager is a Microsoft® Windows® based, central management application for our cellular routers, metering modems, data concentrators, IoT switches and transmitters.



ONLINE MANAGEMENT

QoS & ANALYTICS

REMOTE FW UPDATES

CENTRAL CONTROL

DEVICE MANAGER



FEATURES

- Remote Management
- Device Configuration
- Managing Remote Operations
- QoS Monitoring
- Alarms, events, reports

SOFTWARE

- Microsoft Windows® client- and server application with database
- Microsoft Active Directory® compatible
- Security: AES encryption, TLS certificate keys

DESIGN

- Scalability
- Full-fledged monitoring
- Quick optimization of device operation properties
- Easy firmware deployment

SUPPORTED

- M2M Routers
- M2M Industrial 2 Routers
- M2M PRO4 Router DCUs
- WM-E metering modems
- WM-i data logger

HOSTED ON-PREMISE FOR HIGH-SECURITY



The Device Manager delivers exceptional data protection and security for sensitive equipment and information. This solution is specifically optimized for extensive enterprise deployments and is highly valued by our utility clients and telecom partners. Ideal for enterprise or government deployments with strict ICT policies.

OPTIMIZED FOR LARGE SCALE ENTERPRISE DEPLOYMENTS



Our Device Manager significantly reduces the time necessary to do bulk FW updates, decreasing it from 15-20 minutes per device to a mere 1-2 minutes.

This efficiency boost enables involved businesses to concentrate on growth and innovation, maximizing their operational effectiveness.

Improve the network availability, management and operational efficiency of your device fleet remotely!



CONTACT US

WM SYSTEMS LLC

8 Villa str., Budapest H-1222 HUNGARY
Opening hours: 9.00–17.30 CET

INTERNATIONAL SALES

EUROPE, AFRICA, ASIA, NORTH-AMERICA,
SOUTH-AMERICA, AUSTRALIA

Inquiries related to products and services, requests for proposals,
orders, partnership and reseller contracts, projects

+36 70 360 5638

intersales@wmsystems.hu

TECHNICAL SUPPORT

online assistance, technical support, tech demo

iotsupport@wmsystems.hu



The images in this document are for illustration purposes only. WM Systems LLC is not responsible for any errors in the information contained in this document. The provided data may change without notice. The information provided is informative. For more information, contact our sales colleagues.

Website: www.wmsystems.hu

WM Systems LLC 8 Villa, Budapest, 1222 HUNGARY
Email: intersales@wmsystems.hu